

EXECUTIVE EDUCATION ADVISORY



A Strategic Partner to Boards and the C-Suite

In an era of regulatory scrutiny, geopolitical uncertainty, technological disruption, and rising stakeholder expectations, the decisions made at the board and C-suite level have never mattered more.

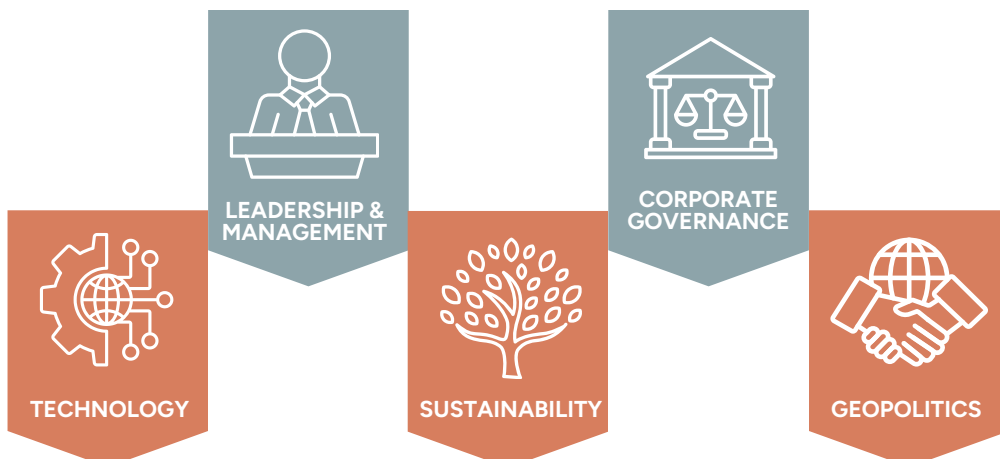
Our **Executive Education Advisory** practice is purpose-built to support these leaders at the top.

We partner directly with boards, CEOs, and senior leadership teams to tackle enterprise-level challenges by combining academic rigor, regional insight, and practical execution experience. Our approach integrates strategic advisory and building the leadership capacity to navigate complexity from within.

Anchored in the intellectual capital of a leading business school and informed by deep regional understanding, our work is structured around five strategic pillars.



OUR ADVISORY PILLARS





LEADERSHIP AND MANAGEMENT

Sustainable performance begins with leadership alignment. We partner with CEOs and senior leadership teams to strengthen executive cohesion, clarify strategic priorities, and build organizational capability at scale.

Our work focuses on leadership team effectiveness, succession planning, talent strategy, culture transformation, and enterprise-wide alignment. As an extension of our executive education expertise, we integrate leadership development into advisory engagements - ensuring that transformation is not dependent on external advisors but embedded within the organization's leadership DNA.

CORPORATE GOVERNANCE

Robust governance is the foundation of institutional resilience and long-term value creation. We work with boards and board committees to enhance effectiveness, strengthen oversight, and reinforce accountability in increasingly complex regulatory and stakeholder environments.

Our advisory support includes board effectiveness reviews, governance structure design, succession planning, risk oversight frameworks, and alignment between board and management. We help directors and executives elevate stewardship standards while ensuring governance enables - rather than constraint - strategic agility.



TECHNOLOGY

Technology is redefining competitive advantages, governance responsibilities, and operating models. We advise boards and executive teams on overseeing digital transformation, governing emerging technologies, and aligning innovation with enterprise strategy.

Our work spans digital strategy alignment, AI governance, cybersecurity oversight, data strategy, and technology-enabled business model transformation. We ensure that technological advancement is responsibly governed, strategically aligned, and leadership-enabled.



SUSTAINABILITY

Sustainability has moved beyond compliance to become a central driver of risk management, capital access, and competitive advantage. We advise boards and senior management on integrating sustainability into enterprise strategy, governance, operations, and reporting.

Our approach spans ESG governance frameworks, materiality assessments, sustainable value creation models, stakeholder strategy, and regulatory preparedness. We help organizations transition from reactive reporting to proactive, strategy-led sustainability that strengthens reputation, resilience, and long-term performance.

GEOPOLITICS

Geopolitical volatility, policy shifts, and regional fragmentation increasingly shape strategic outcomes. We equip leadership teams with the insight and foresight needed to anticipate risk, assess exposure, and respond decisively to external shocks.

Drawing on regional expertise and global perspectives, we support scenario planning, cross-border strategy, regulatory risk assessment, and supply chain resilience. Our advisory enables organizations to navigate uncertainty with informed judgment and strategic clarity.



Why Work With Us

We help organizations convert structured, defensible systems that protect enterprise value and support disciplined growth.

For more info, contact:
✉ ee-advisory@asb.edu.my



Iclif Executive Education Center



Asia School of Business (DU046(W))

Iclif Executive Education Center

ASB Academic, No 11, Jalan Dato' Onn, 50480 Kuala Lumpur

Email: ExecEd@asb.edu.my

exec.asb.edu.my



[asbiclif](https://www.linkedin.com/company/asbiclif)



[@asb.iclif](https://www.instagram.com/asb.iclif)



[asbiclif](https://www.facebook.com/asbiclif)



[asb iclif](http://asb.iclif)