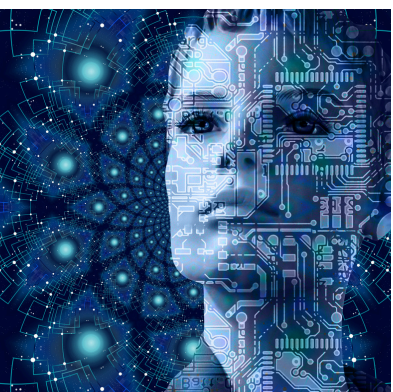
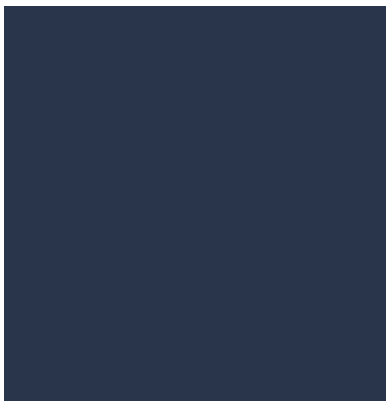
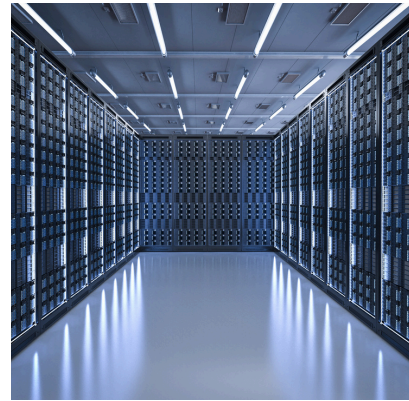


# EXECUTIVE EDUCATION ADVISORY

# TECHNOLOGY

AI-Driven Digital Transformation





## OUR STRATEGIC ADVISORY FOCUS

Our approach delivers strategic and operational organizational transformation using Artificial Intelligence (AI). We build both capability and structure, helping organizations adopt AI safely, generate measurable value, and scale sustainably. Our offerings integrate practical advisory, Responsible AI governance, and competency-led workforce development into one cohesive model.



## AMONG THE SERVICES OFFERED

### 01 AI COMPETENCY LEVEL ASSESSMENT

Assess your organization's AI Competency level and prepare a structured approach to upskilling your workforce. We can support you in the following areas:

- **Current State Diagnostic:** A comprehensive review of current initiatives, data maturity, skills, governance, and your existing technology landscape.
- **Capability & Skills Analysis:** An evaluation of workforce readiness and required competencies for the AI era.
- **Upskilling Initiatives:** Equipping teams with the essential skills required to excel in an AI-driven landscape.
- **Process & Use Case Opportunity Scan:** Identification of areas where AI can deliver rapid productivity, quality, or decision-making improvements.

#### WHAT YOU RECEIVE:

- **AI Readiness Scorecard** complete with a capability upskilling proposal.
- **Leadership Briefing** to align strategic direction with AI process & use case opportunities and immediate next steps.
- **AI Readiness Roadmap** outlining short, medium, and long-term upskilling initiatives and solutioning.

## 02 AI CONSULTANCY & SERVICES

Define business needs, use cases, strategy, governance, and AI requirements. We can support you in the following areas:

- **AI strategy development** strictly aligned to your desired business outcomes.
- **Use-case identification** and strategic prioritization.
- **Analysis of controls and compliance processes**, ensuring alignment with Responsible AI expectations.
- **Process, data, and technology requirement analysis.**
- **Change and adoption planning.**

### WHAT YOU RECEIVE:

- An **AI Roadmap** for your organization
- **Gap & Risk Map** with prioritized, actionable recommendations.
- **Solution Blueprint** featuring a comprehensive Adoption & Change Management Plan.

## 03 AI-ENABLED DIGITAL TRANSFORMATION

As Agentic AI impacts every organization, there is an urgent need to assess and conduct a Digital Transformation initiative for your organization. We can help navigate by:

- **Identify areas** where AI can be applied to improve performance and productivity.
- **Align** the digital transformation plan to the business goals.
- **Pilot** design and proof-of-value execution.
- **Process redesign** to improve performance and productivity.
- **Success Factors** and Return on Investment (ROI) measurements.
- Develop an **AI Governance Framework** for Responsible AI integration.

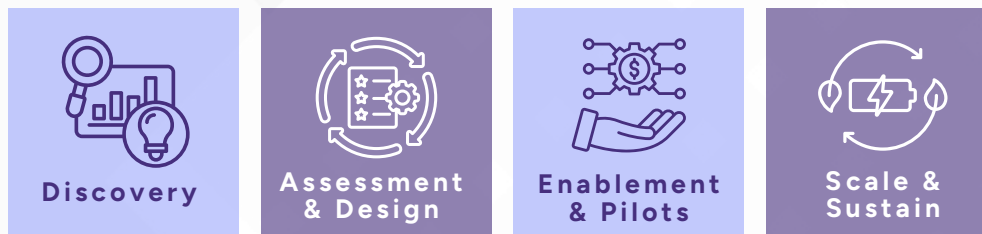
### WHAT YOU RECEIVE:

- **Roadmap with AI-Enabled Operating Playbooks & Standard Operating Procedures.**
- Coaching & Workforce Enablement Sessions.
- Scale-Up & Support Plan.
- **Dashboard** to track ongoing Responsive AI Integration.



## OUR METHODOLOGY

Our end-to-end methodology follows a proven, four-step framework:



## OUR VALUE PROPOSITION

Our end-to-end methodology follows a proven, four-step framework:

Our offerings integrate practical advisory, responsible AI governance, and competency-led workforce development into one cohesive model. We build both capability and structure, helping organizations adopt AI safely, generate measurable value and scale sustainably.

## OUR EXPERTS

Our advisory engagements are supported by an experienced delivery team and conducted under the strict guidance of our Professor of Practice, AI & Technology. This executive oversight ensures that all methodologies, recommendations, and outputs meet the highest standards of technical accuracy, governance alignment, and practical business relevance.



## Why Work With Us

*We help organizations move from AI awareness to confident, responsible adoption - building capability, governance and measurable value at every stage of the transformation journey.*

**For more info, contact:**

[ee-advisory@asb.edu.my](mailto:ee-advisory@asb.edu.my)